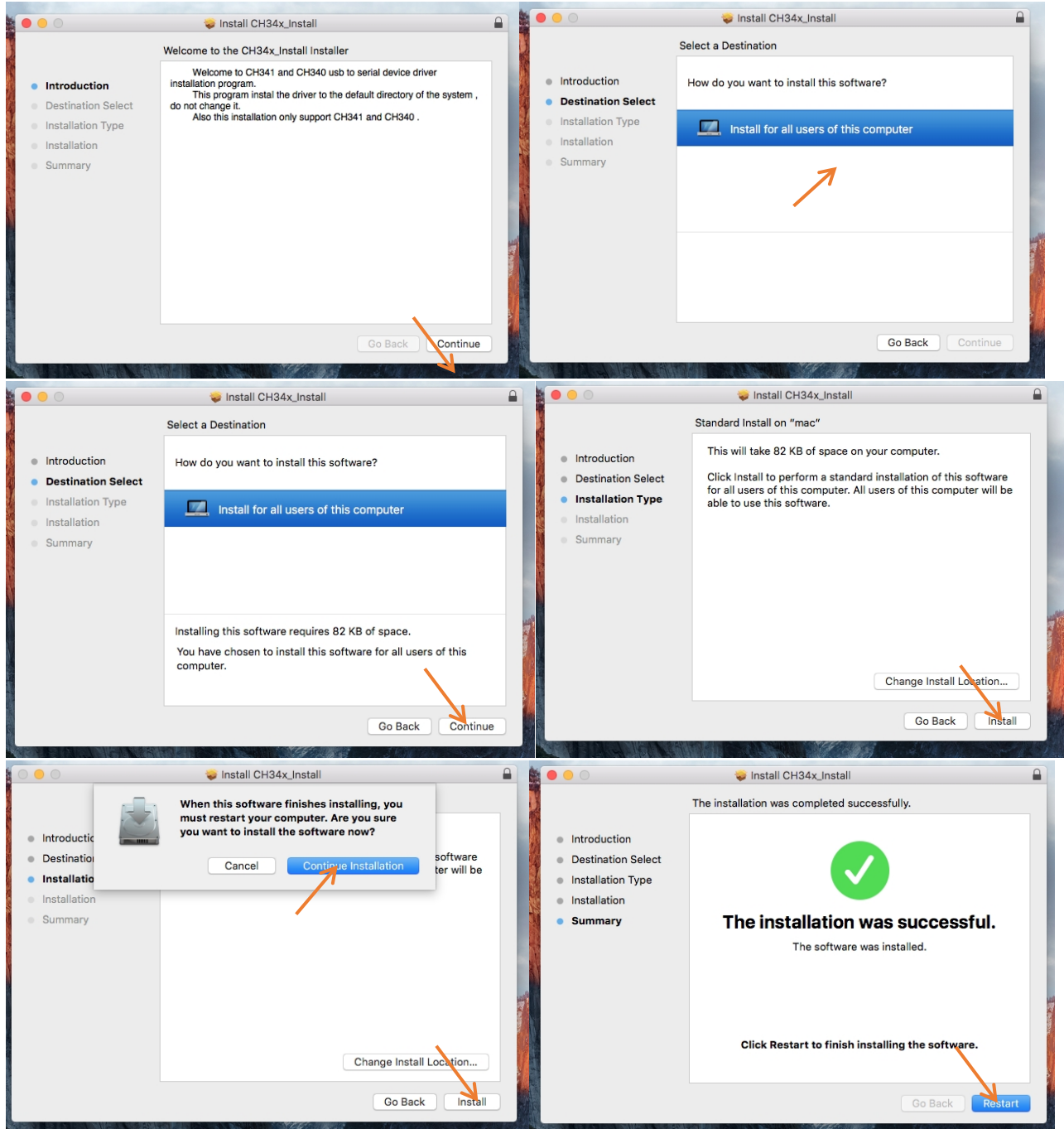


Mac computer online print guide

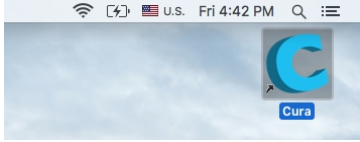
一、Install Driver

Double click CH34x_Install.pkg, enter driver install interface:

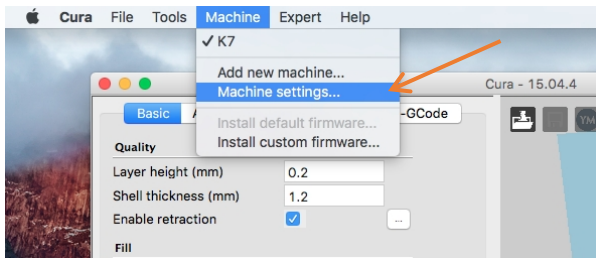


二、online print

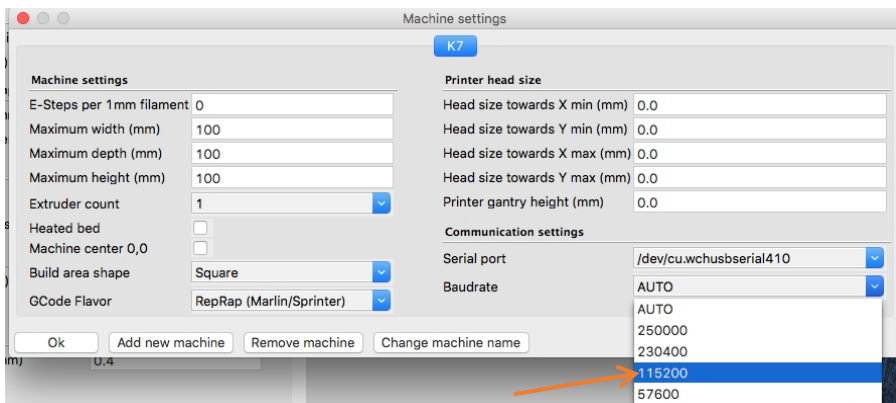
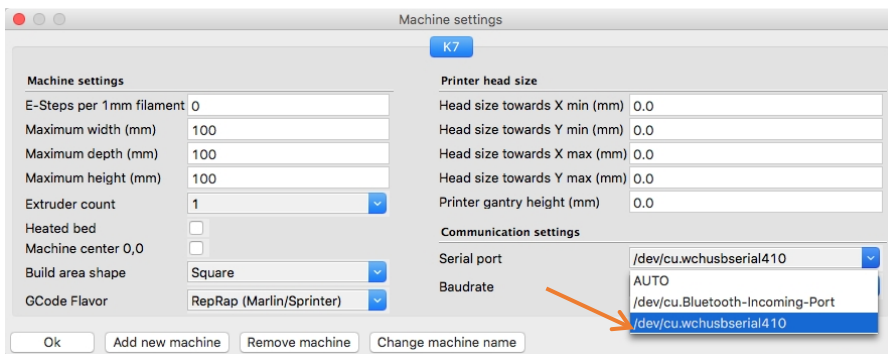
- 1、Connect the computer and the printer, and plug in the printer power supply.
- 2、Insert the TF card into the printer
- 3、double click the CURA icon, open CURA slicer.



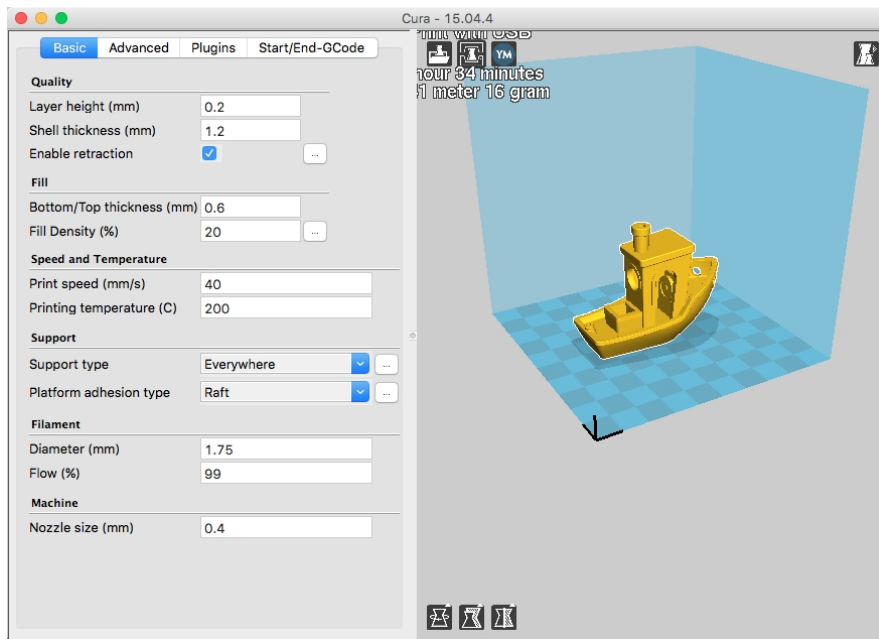
- 4、click“Machine”→“Machine settings”,open printer setting.



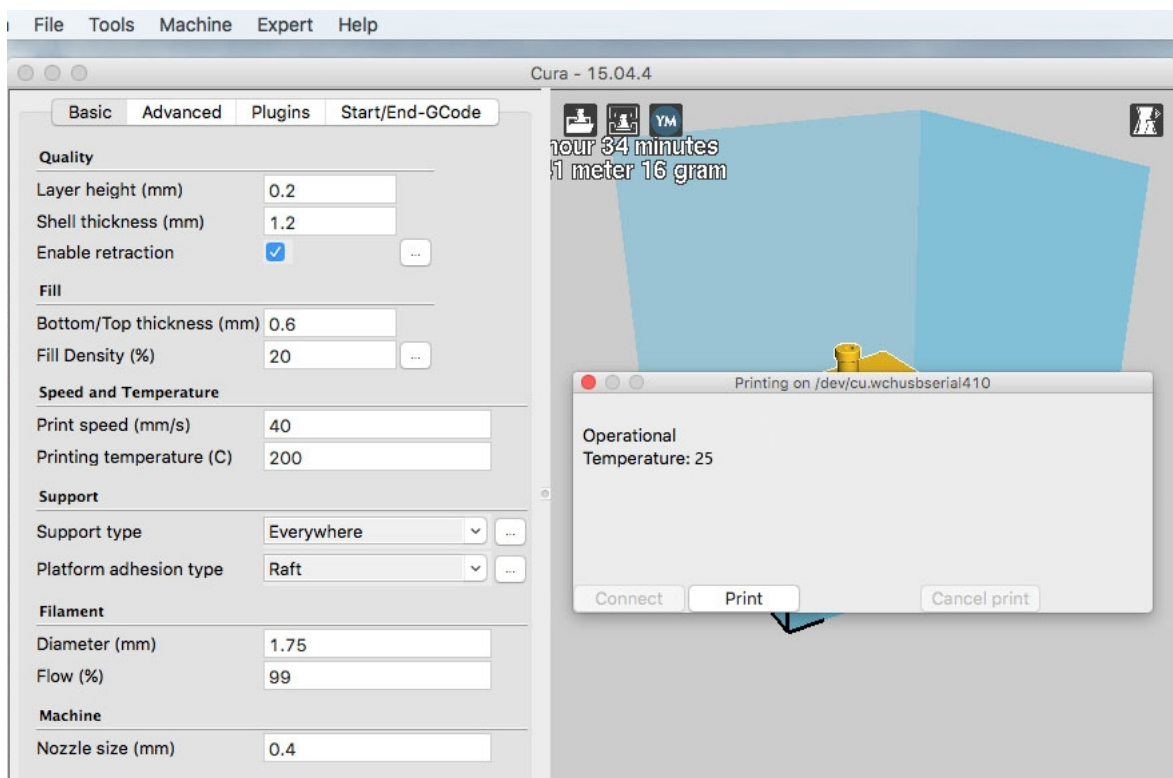
- 5、Select the port and baud rate 115200 generated when the printer is connected to the computer, click“OK”



- 6、click button, import STL file.



7、after slice setting click  icon , enter online print interface



8、click“Print”, Wait for the nozzle temperature to rise to the preset temperature and start printing.

